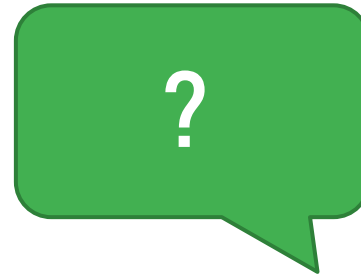
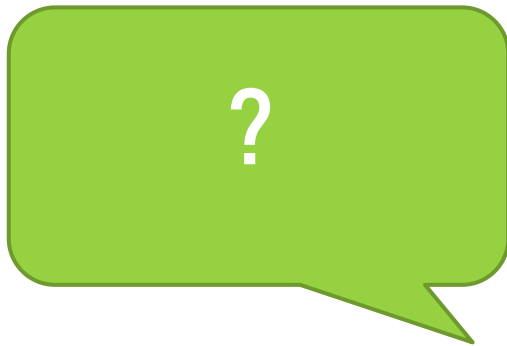
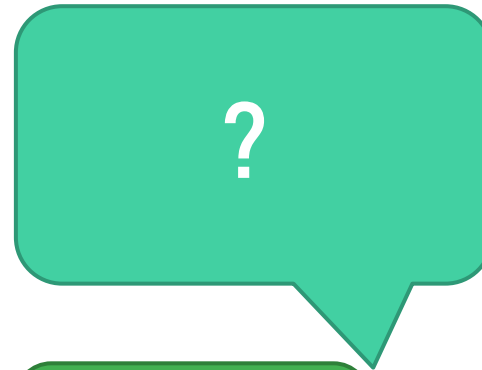
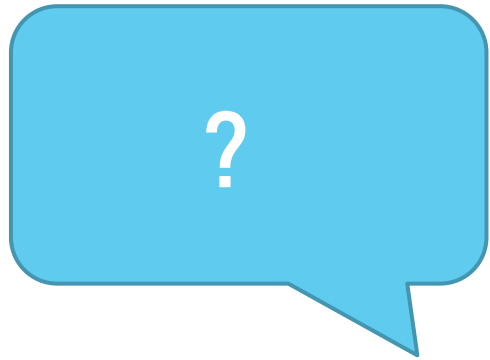


# Ask AK CNP Anything

By Alaska Child Nutrition Programs

# Simple answers to your tough questions



Ask your questions here



# The Answer is YES for EVERYONE

Does the district still accept and approve lunch applications and process Direct Certification? Should districts conduct verification?

If we did not participate in SSO/SFSP during the summer (or, at any time previously), can we serve meals at no cost to our students?

If we switch to SSO/SFSP, do we need to honor allergies?

In the months that all meals are free to students, is it still recommended we run Direct Certifications weekly or monthly?

Can we continue to operate SSO/SFSP program until Dec. 31, 2020?

Can we add SSO/SFSP sites that did not operate during the spring or summer months?

Can we do home or neighborhood delivery?

Ask your questions here



# The Answer is YES for EVERYONE

Can we provide the enrichment activities (either virtually or via handouts) in order to participate in afterschool meal programs like At-Risk?

Can we do different pick up times at our sites? For example, if we did a Monday, Wednesday, Friday pick up during the day and a Monday evening pick up (5pm to 6pm) distribution for the entire week?

In SSO/SFSP is it ok to serve weekends, school vacations and holidays?

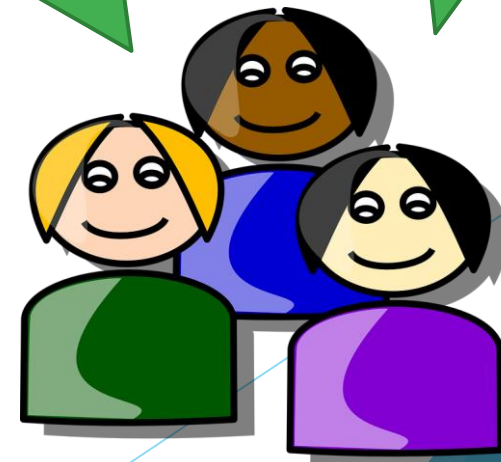
For SFSP Lunch there are no vegetable subgroups that need to be met, right? We need to serve two (2) different types of fruits and/or vegetables.

If we offer weekend meals on Fridays, do we check off Saturday and Sunday in the SSO/SFSP application?

Can we serve multiple meals in a single day?

Can a district operating SSO/SFSP also participate in the CACFP At-Risk Meals Program?

Ask your questions here



# The Answer is YES for EVERYONE

Can we extend the SSO/SFSP to all schools in the district? I only had 2 of my 7 sites doing SSO/SFSP from March to May.

We will continue with SSO/SFSP. Our students are either in-school, hybrid or remote learning. Can we have open sites if students are in the building?

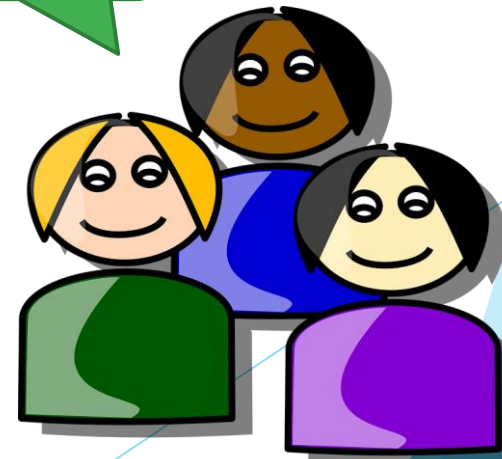
Can we have 3 locations during the week for SSO/SFSP, but restrict to one pickup location on Saturday/Sunday?

Do we still need to do the SRM in October and April?

Can we deliver meals or have mobile routes for SSO/SFSP?

Can I operate SSO/SFSP at 2 of my schools and NSLP/SBP at others?

Ask your questions here



# The Answer is **MAYBE** for **EVERYONE**

We are a regional or boarding school. May students are very far away. During remote learning can students get meals from the towns they live in?

May homeschool and younger siblings participate in the SSO/SFSP meal service?

May family members also participate in the SSO/SFSP meal service?

Can we serve remote students up to 7 days of meals on one day?

You will need to make sure their home district is operating open sites for the to go to. You will still have to make lunch available for pick up.

Open sites may serve meals to all children age 18 or under in the community; closed enrolled sites may serve only to enrolled students; adult family members are not eligible.

Only, if you can ensure food can be safely consumed 7 days after it is distributed.



# The Answer is **NO** for EVERYONE

We are currently operating NSLP are we required to implement and apply for the SSO/SFSP waiver?

Are we required to deliver meals to students eligible for Free or Reduced-Price only?

If you opt for SNP are all meals served reimbursed as free?

Does SSO provide a better reimbursement rate than NSLP/SBP?

In SSO/SFSP do we have to take names and student ID numbers at Point of Service?

If I operate SSO can I serve the SFSP meal pattern?

In NSLP can I serve on weekends, vacations and Holidays?

Ask your questions here



# Fast Facts About Fall Meal Service

You must choose a program district wide: NSLP, SSO, or SFSP. This is a local decision.

SSO and SFSP has been extended no later than 12/31/20 and the authorization could end before then depending upon funding.

You can distribute meals to both in person and remote learners, you can serve meals for multiple days.

If a school day counts as an instruction day you can count any meals served or distributed to all enrolled students in your district.

You can serve weekend meals while operating under SFSP or SSO.

FFVP service may be conducted at SFSP enrolled sites for eligible children or all children at open sites.



# Fast Facts About Fall Meal Service

Communication is Critical: Different locations for delivery, special requirements for delivery, and/or sudden closures of schools are important to communicate with all delivery vendors for timely delivery, food safety and reduction in potential delivery charges/surcharges for unsuccessful deliveries.

All meals served will be serve free and reimbursed at the Free rate while you are operating SFSP; this applies to meals served in person and meals distributed for remote learners.

If you are a regional school district your students can go to sites in their hometown to pick up meals if those sites are operating an open site under SSO/SFSP.

Parents can pick up meals without students present and there are no restrictions on serving times which gives you flexibility on when meals can be offered.

USDA is an equal opportunity employer and provider.